



## NEW – EXCLUSIVE EDITION

# RXP<sup>®</sup>-X<sup>®</sup> RS APEX 300

The most exclusive high performance PWC on the water.

### KEY FEATURES

- Exclusively available for a limited time
- Rotax<sup>®</sup> 1630 ACE<sup>™</sup> – 300 engine
- T3-R<sup>™</sup> hull
- Launch control
- Ergolock<sup>™</sup> R racing seat
- Hydraulic steering damper and redesigned steering column
- Double-angled footwell wedges
- X-sponsons
- **Tech Package:** BRP Audio – Premium System, full color 7.8" wide display and USB port
- **Apex Package:** Carbon fiber hood and mirrors. Exclusive coloration on handgrips, carpets, stitching, badging, decals. Matching passenger seat and vehicle cover included



● NEW Racing Green

### CAPACITY

Rider Capacity	
Weight Capacity	400 lb/182 kg
Fuel Capacity	18.5 US gal/70 L
Glove Box	2.56 US gal/9.7 L
Front Bin	37.78 US gal/143 L
Storage Capacity – Total	40.6 US gal/153.7 L

### DIMENSIONS

Length (bumper to bumper)	130.6"/331.8 cm
Width	49.2"/125 cm
Height	44"/111 cm

### HULL

Type	T3-R Hull <sup>™</sup>
Material	Fiberglass

### OTHER FEATURES

- iBR – Intelligent Brake & Reverse
- Extended VTS<sup>™</sup> (Variable Trim System)
- RF D.E.S.S.<sup>™</sup> key
- Watertight phone compartment
- LinQ<sup>®</sup> attachment system
- Wide-angle mirrors
- Round handle grips
- Footwell carpets
- Large swim platform
- Ski tow eye

### ROTAX<sup>®</sup> ENGINE

Intake System	1630 ACE <sup>™</sup> – 300
Displacement	Supercharged with external intercooler
Cooling	1,630 cc
Reverse System	Closed-Loop Cooling System (CLCS)
Fuel Type	Electronic iBR <sup>®*</sup>
Throttle System	98 Octane
Exhaust System	iTC <sup>™</sup> (Intelligent Throttle Control)
	D-Sea-Bel <sup>™</sup> system

### GAUGE

Type of Gauge	Large panoramic 7.8" wide LCD display	
Main Functions	• BRP Connect	• Clock
	• Music	• VTS <sup>™</sup>
	• Weather	• Fuel consumption
	• Bluetooth connectivity	• Fuel autonomy
iTC System – Mode	• Speedometer	• Speed statistics
	• RPM	• Vehicle hours
	• Sport mode	• Speed regulator
	• ECO <sup>®</sup> mode	• Launch control
	• Slow mode	

### WEIGHT

Dry Weight	780 lb/354 kg
------------	---------------

### WARRANTY

BRP limited warranty covers the watercraft for 2 years.

\*Electronic brake, neutral and reverse.

FEATURE HIGHLIGHTS



### Carbon Fiber Styling

Full carbon fiber hood and mirrors combine with premium badging, decals and color scheme to provide a breathtaking appearance to match its impressive performance.



### Apex Exclusive Features

The Apex only color scheme is complete with color matched hand grips, passenger seat and exclusive Apex branded vehicle cover.



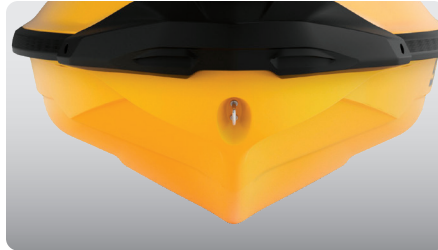
### Hydraulic Steering Damper and Redesigned Steering Column

An industry first, it redefines rider control by reducing input from the water; creating a solid and predictable feel that can be adjusted to rider preference. A reinforced steering column will withstand high performance stress.



### Rotax® 1630 ACE™ – 300 Engine

The Rotax 1630 ACE – 300 is the most powerful Rotax engine ever, delivering high efficiency and best-in-class acceleration.



### T3-R Hull™

A deep-V design that offers unrivaled handling and acceleration and a new level of control at high speed.



### Ergolock™ R System

A narrow seat profile with deep knee pockets and a revolutionary adjustable saddle that allows riders to lock in to the machine like never before.

©2022 Bombardier Recreational Products Inc., (BRP). All rights reserved. ®, TM and the BRP logo are trademarks of Bombardier Recreational Products Inc. or its affiliates. All product comparisons, industry and market claims refer to new sit-down PWC with 4-stroke engines. Watercraft performance may vary depending on, among other things, general conditions, ambient temperature, altitude, riding ability and rider/passenger weight. Testing of competitive models done under identical conditions. Because of our ongoing commitment to product quality and innovation, BRP reserves the right at any time to discontinue or change specifications, price, design, features, models, or equipment without incurring any obligation. †Garmin is a trademark of Garmin Ltd. or its subsidiaries.